

# S4OPTIK

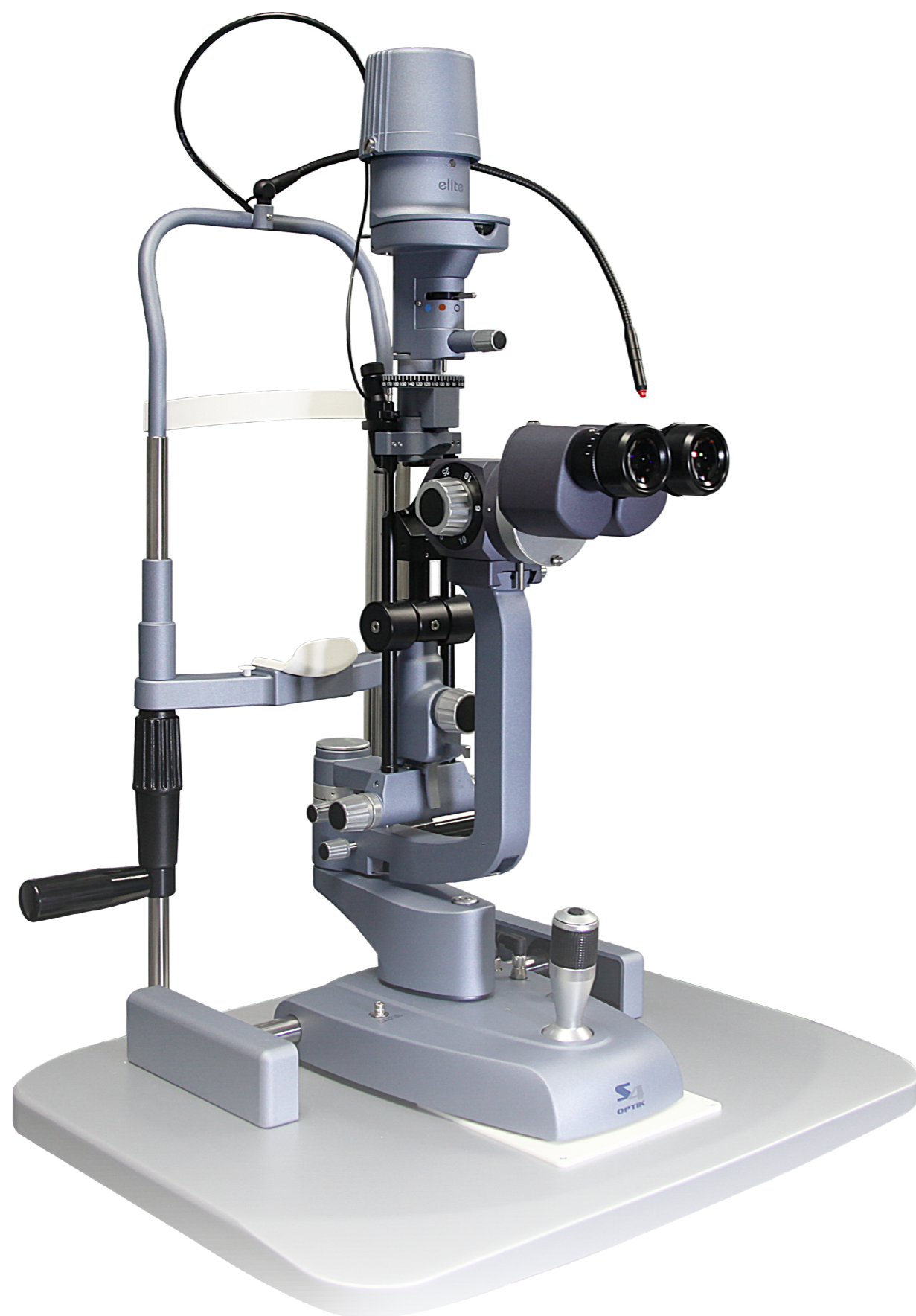


## **H5 ELITE HD**

Slit Lamp

An Exceptional Premium Slit Lamp Experience

European Craftmanship & Design



# S4OPTIK H5 ELITE HD

While S4OPTIK's regular line of slit lamps have received universal acclaim for their exceptional optics, this slit lamp takes it one step further. With optics and light transmission standards that meet stricter tolerances, stereopsis is effortlessly achieved and observation characteristics are extraordinarily clear.

## SL-H5 features

- LED ILLUMINATION
- EXCEPTIONAL OPTICS
- ERGONOMICALLY DESIGNED
- EUROPEAN CRAFTSMANSHIP
- DIGITAL READY
- DV-1 IMAGING MODULE (option)

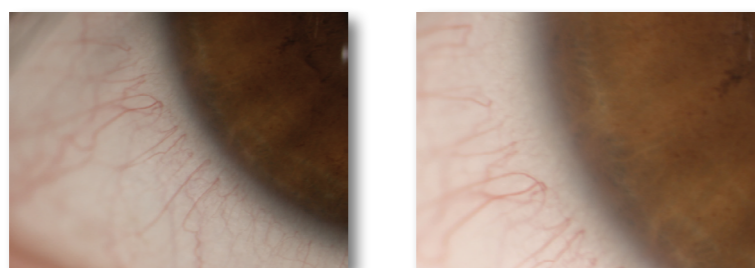
# LED illumination

The H5 ELITE HD slit lamp features S4OPTIK's cool operating LED illumination system. In addition to providing a brilliant light spectrum, the cool white light is easy on the patient, effectively eliminating discomfort.

"Control at your fingertips" - the conveniently positioned illumination rheostat allows precise brightness control with the ability to boost to full illumination by simply pressing down.

**60,000 HOURS OF ILLUMINATION**





# exceptional optics

Equipped with high wide eyepieces, the H5 ELITE HD allows immediate, effortless achievement and maintenance of stereopsis for fatigue-free observation.

European craftsmanship and engineering provide exceptional parfocal optics with 5 magnification steps up to 40x, to facilitate



Converging eyepieces assist with immediate fusion

# ergonomically designed

## Intuitive Operation

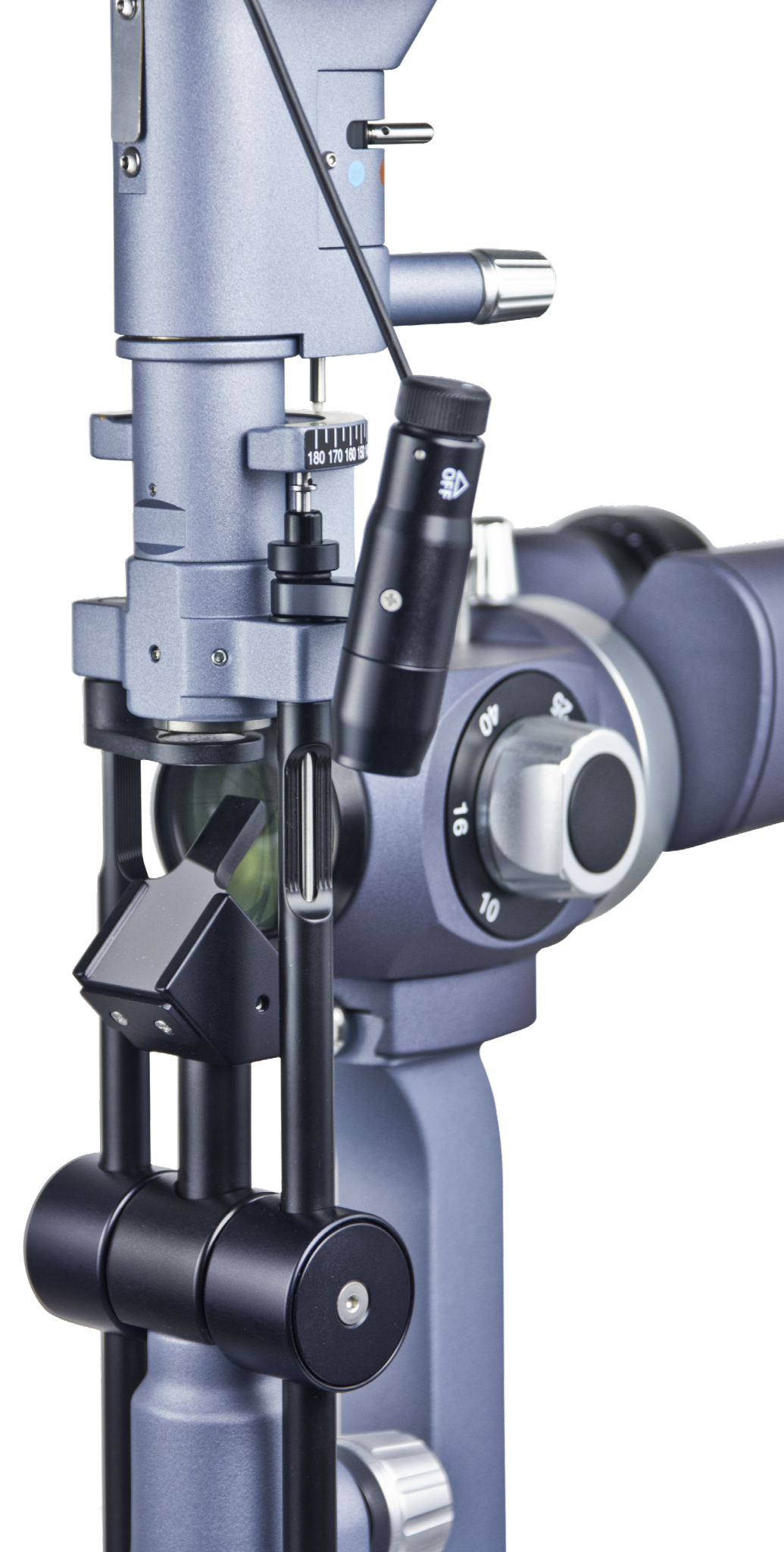
The H5 ELITE HD slit lamp has been ergonomically designed with all controls easily accessible to ensure comfortable and intuitive operation.



# europaean craftsmanship

## Enjoy The Slit Lamp Exam

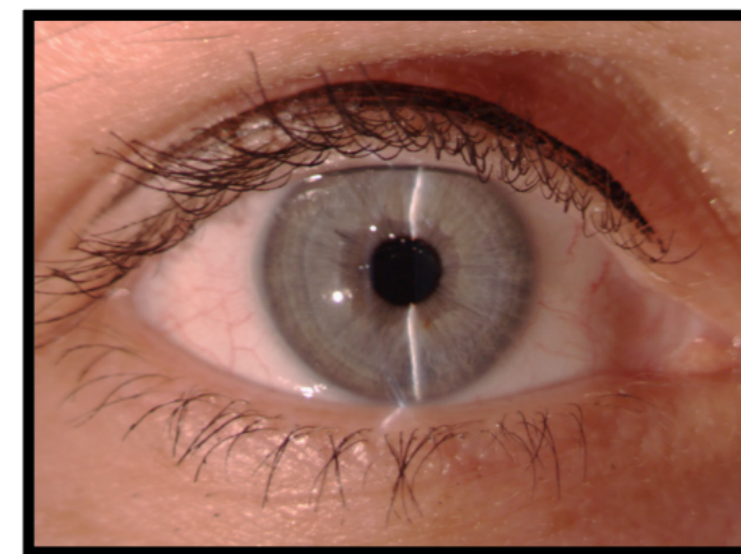
The combination of advanced engineering and the use of superior materials boast smooth, effortless movements, resulting in a positive positioning experience for the clinician.



# digital ready

## Designed for Growth

The standard background illumination light source and the integrated joystick mounted trigger makes the addition of digital imaging a simple process. Together they facilitate brilliant digital imaging simply with the press of a button.



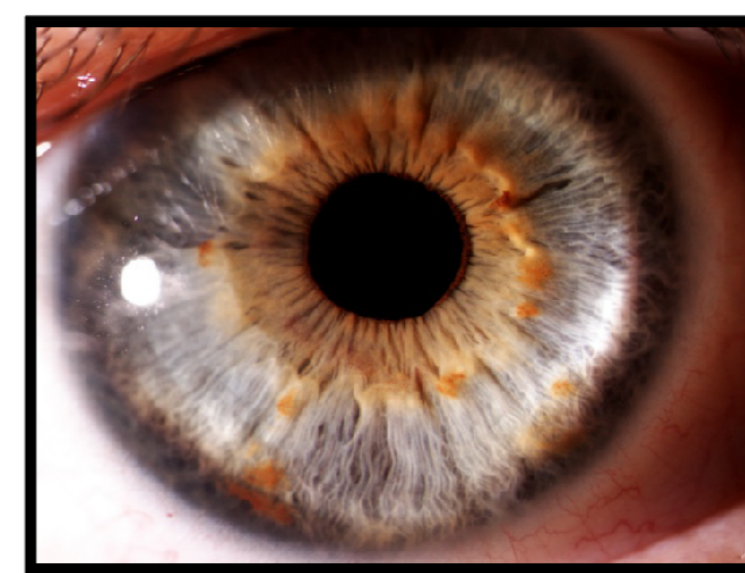
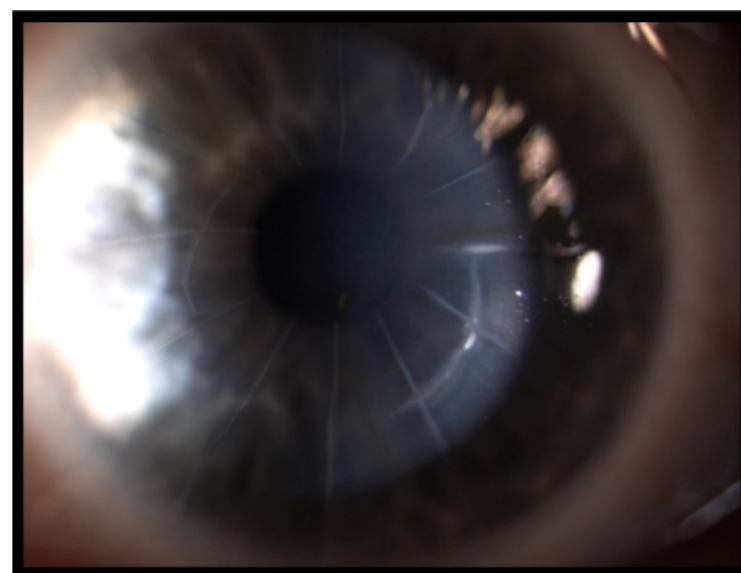
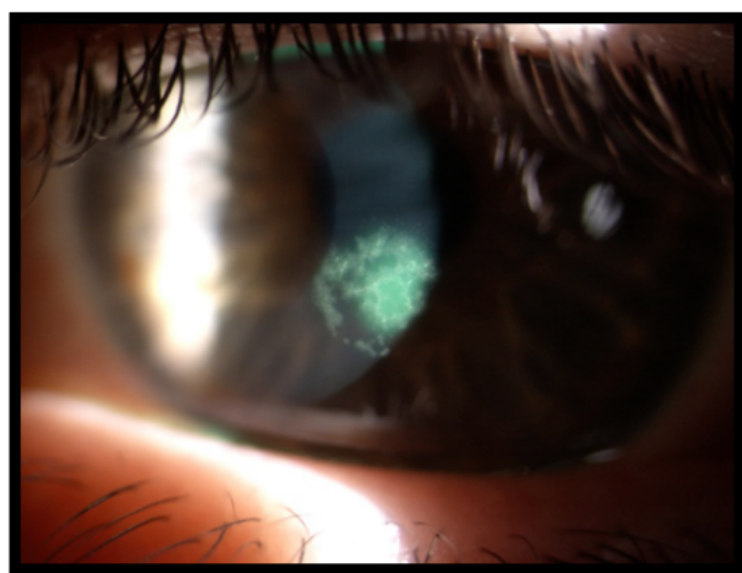


# S4OPTIK DV-1 Digital Vision Imaging Module

## Exceptional Imaging – Simply

The new S4OPTIK DV-1 seamlessly connects with the H5 ELITE HD slit lamp to provide brilliant imaging at the press of a button. Professional quality still images and video sequences can be acquired effortlessly.

Optimized for ocular imaging, the DV-1's combination of 2MP image size and fast frame rate present smooth video observation and impressive depth of colour imaging.





# Specs

Binocular Head	Galilean magnification changer with converging eyepieces
Magnification	6x, 10x, 16x, 25x, 40x
Light Source	LED
Built-in Yellow Filter	YES
Digital Imaging Ready	YES
Optional Eyepieces	NO
Weight (lbs/kg)	45 / 20

## Optional Accessories

- S4OPTIK DV-1 Digital Vision Imaging Module
- Inclined Eyepieces

### About S4OPTIK

Modern Design, Quality Materials, Exceptional Value.

Understanding the unique needs of eye care practices all over the world, S4OPTIK delivers extraordinary value in high quality diagnostic equipment and accessories. With modern designs to enhance your office environment, competitive prices to help you manage your costs, and an industry leading warranty, S4OPTIK eye care instruments help you deliver the very best in patient care. Contact us today for pricing.

**BR-H5-ELITE-EN-11/16-1.00**